

Quest Diagnostics Incorporated
1290 Wall Street West
Lyndhurst, NJ 07071



News From Quest Diagnostics

Quest Diagnostics Contacts:

Laure Park (Investors): 201-393-5030
Jennifer Somers (Media): 201-729-8386

Amphetamines Use Declined Significantly Among U.S. Workers in 2005, According to Quest Diagnostics' Drug Testing Index

-- Drug Use Among Workers Declines to 17-year Low in 2005 --

LYNDHURST, N.J., June 19, 2006 – Amphetamines use, which includes amphetamine and methamphetamine, declined significantly among general U.S. workforce employees during 2005, according to the semi-annual Drug Testing Index, released today by Quest Diagnostics Incorporated (NYSE: DGX), the leading provider of employer drug testing services in the United States. The findings were based on the results of more than 7.3 million workplace drug tests performed by Quest Diagnostics around the country during 2005. The Drug Testing Index compares positivity rates for various drugs by calculating the proportion of positive results for each drug to the total number of drug tests performed.

The Drug Testing Index is published as a public service for government, media and industry and has been considered a benchmark for national trends since its inception in 1988. The 2005 Drug Testing Index summarizes the results of workplace drug tests performed by Quest Diagnostics between January and December 2005. It examines positivity rates among three major testing populations: federally-mandated, safety-sensitive workers; the general workforce; and the combined U.S. workforce. Federally-mandated, safety-sensitive workers include pilots, bus and truck drivers and workers in nuclear power plants, for whom routine drug testing is mandated by the U.S. Department of Transportation and the Nuclear Regulatory Commission.

In 2005, the incidence of amphetamines drug-test positives declined 8% to 0.48% of all drug tests of general U.S. workforce employees that identify amphetamines use. During 2004 amphetamines drug-test positives were 0.52%. Among federally-mandated, safety-sensitive workers, the positivity rate for amphetamines rose by 13% to 0.35% in 2005 from 0.31% in 2004.

Prompted by strong interest from the White House Office of National Drug Control Policy, Quest Diagnostics performed a preliminary review of amphetamines drug-test positives for the first five months in 2006. Between January and May 2006, amphetamines drug-test positives among general U.S. workforce employees declined by 10% versus 2005, reaching 0.43% of all drug tests that identify

amphetamines use. Among federally-mandated, safety-sensitive workers, the positivity rate for amphetamines declined by 20% during the 2006 period reaching 0.28% of all drug tests that look for amphetamines use.

Among a large group of general U.S. workforce employees, the incidence of methamphetamine positives of all drug tests that look for amphetamines, declined from 0.33% in 2004 to 0.26% in 2005 and to 0.18% in the first five months of 2006. Compared to 2005, this represents a 31% decrease in the first five months of 2006, and a 45% decrease since 2004. For federally-mandated, safety-sensitive workers, the incidence of methamphetamine drug-test positives declined by 28% during the first five months of 2006, compared to 2005, reaching 0.18% of all drug tests that look for amphetamines. Amphetamines positivity in the first five months of 2006 is at its lowest point since 2002-2003 among general U.S. workforce employees and federally-mandated, safety-sensitive workers.

Amphetamines belong to a category of drugs known as stimulants, which are used by individuals to increase alertness, relieve fatigue, feel stronger and more decisive.¹ Amphetamines include the drugs amphetamine, dextroamphetamine, methamphetamine and their various salts. Chemical properties and actions of these individual drugs are very similar. Methamphetamine is typically produced clandestinely for illicit use.

“During 2005 we detected a downward trend in amphetamines positive test results in the general U.S. workforce and in 2006 the trend took hold among all U.S. workers,” said Barry Sample, Ph.D., Director of Science and Technology for Quest Diagnostics’ Employer Solutions division. “In the first five months of 2006 amphetamines drug-test positives declined to a three-and-a-half year low among both groups, driven by significant declines in methamphetamine drug-test positives. This finding could reflect the increased efforts by federal, state and local authorities to shut down clandestine methamphetamine laboratories.”

Overall, the testing data indicated that workplace drug use fell to the lowest level since Quest Diagnostics began publishing the Drug Testing Index in 1988. Of all tests for all drugs performed by Quest Diagnostics during 2005 for the combined U.S. workforce, 4.1% had positive results, compared to 4.5% in 2004 and 13.6% in 1988. A significant decline in positive marijuana drug test results among all U.S. workers drove the decline. Use of marijuana among U.S. workers, as measured by positive drug test results, decreased by approximately 12% in 2005 among all categories of workers compared to 2004.

Color graphics of the Drug Testing Index, including regional maps which show positivity rates by type of drug, are available on-line at www.questdiagnostics.com to provide more localized workplace drug test data. The Drug Testing Index is released every six months as a service for government, media and industry, and is considered a benchmark for national trends.

About Quest Diagnostics

Quest Diagnostics is the leading provider of diagnostic testing, information and services that patients and doctors need to make better healthcare decisions. The company offers the broadest access to

¹ Source: U.S. Department of Health and Human Services and SAMHSA’s National Clearinghouse for Alcohol and Drug Information, Drug Category Profile: Stimulants, <http://ncadi.samhsa.gov/govpubs/rpo926/>

diagnostic testing services through its national network of laboratories and patient service centers, and provides interpretive consultation through its extensive medical and scientific staff. Quest Diagnostics is a pioneer in developing innovative new diagnostic tests and advanced healthcare information technology solutions that help improve patient care. Additional company information is available at: www.questdiagnostics.com.

The statements in this press release which are not historical facts or information may be forward-looking statements. These forward-looking statements involve risks and uncertainties that could cause actual results and outcomes to be materially different. Certain of these risks and uncertainties may include, but are not limited to, competitive environment, changes in government regulations, changing relationships with customers, payers, suppliers and strategic partners and other factors described in the Quest Diagnostics Incorporated 2005 Form 10-K and subsequent SEC filings.

The Drug Testing Index© 2006 Quest Diagnostics Incorporated. All rights reserved.

(tables follow)

Annual Positivity Rates

(For Combined U.S. Workforce)

(More than 7.3 million tests from January to December 2005)

Year	Drug Positive Rate
1988	13.6%
1989	12.7%
1990	11.0%
1991	8.8%
1992	8.8%
1993	8.4%
1994	7.5%
1995	6.7%
1996	5.8%
1997	5.0%
1998	4.8%
1999	4.6%
2000	4.7%
2001	4.6%
2002	4.4%
2003	4.5%
2004	4.5%
2005	4.1%

Positivity Rates By Testing Category

Testing Category	2005	2004	2003	2002	2001
Federally Mandated, Safety-Sensitive Workforce	2.3%	2.3%	2.5%	2.5%	2.9%
General U.S. Workforce	4.5%	4.9%	5.0%	4.8%	4.9%
Combined U.S. Workforce	4.1%	4.5%	4.5%	4.4%	4.6%

Positivity Rates By Testing Reason**(For Federally Mandated, Safety Sensitive Workforce)***(Approximately 1.3 million tests from January to December 2005)*

Testing Reason	2005	2004	2003	2002	2001
Follow-Up	3.1%	3.3%	3.4%	3.8%	4.3%
For Cause	13.4%	14.1%	13.8%	14.3%	14.4%
Periodic	0.8%	0.51%	0.75%	0.95%	1.1%
Post-Accident	3.0%	2.9%	3.1%	3.3%	3.6%
Pre-Employment	2.6%	2.7%	2.9%	2.9%	3.4%
Random	1.8%	1.8%	1.9%	1.9%	2.2%
Returned to Duty	3.0%	2.9%	2.8%	3.4%	3.5%

Positivity Rates By Testing Reason**(For General U.S. Workforce)***(More than 6.0 million tests from January to December 2005)*

Testing Reason	2005	2004	2003	2002	2001
Follow-Up	9.6%	10.0%	9.6%	10.3%	11.3%
For Cause	28.3%	27.8%	28.2%	25.9%	26.1%
Periodic	2.4%	1.9%	2.2%	2.7%	3.4%
Post-Accident	5.8%	5.7%	5.7%	5.9%	6.0%
Pre-Employment	3.9%	4.1%	4.1%	4.3%	4.4%
Random	6.6%	7.1%	6.6%	6.5%	7.0%
Returned to Duty	6.0%	5.5%	5.6%	5.6%	5.3%

Positivity Rates By Drug Category**(For Federally Mandated, Safety-Sensitive Workforce, as a percentage of all such tests)***(Approximately 1.3 million tests from January to December 2005)*

Drug/SVT Category	2005	2004	2003	2002	2001
Amphetamines	0.35%	0.31%	0.29%	0.28%	0.29%
Cocaine	0.60%	0.57%	0.59%	0.56%	0.60%
Marijuana	1.10%	1.25%	1.34%	1.44%	1.72%
Opiates	0.18%	0.17%	0.19%	0.19%	0.26%
PCP	0.04%	0.04%	0.04%	0.04%	0.05%
Invalid	0.12%	0.08%	0.08%	0.06%	N/A
Oxidizing Adulterants (incl. Nitrites)	0.00%	0.02%	0.03%	0.05%	0.05%
Substitution	0.05%	0.06%	0.06%	0.05%	0.02%

Positivity Rates By Drug Category**(For General U.S. Workforce, as a percentage of all such tests)***(More than 6.0 million tests from January to December 2005)*

Drug/SVT Category	2005	2004	2003	2002	2001
Amphetamines	0.48%	0.52%	0.49%	0.34%	0.29%
Barbiturates	0.25%	0.27%	0.29%	0.30%	0.34%
Benzodiazepines	0.58%	0.58%	0.60%	0.58%	0.60%
Cocaine	0.70%	0.72%	0.74%	0.71%	0.69%
Marijuana	2.54%	2.88%	2.96%	2.98%	3.17%
Methadone	0.23%	0.21%	0.20%	0.16%	0.13%
Opiates	0.32%	0.32%	0.34%	0.27%	0.29%
PCP	0.02%	0.01%	0.03%	0.02%	0.02%
Propoxyphene	0.57%	0.63%	0.67%	0.73%	0.52%
Invalid	0.16%	0.10%	0.10%	0.09%	N/A
Oxidizing Adulterants (incl. Nitrites)	0.00%	0.01%	0.02%	0.05%	0.05%
Substitution	0.01%	0.03%	0.03%	0.03%	0.03%

Amphetamines Positivity Rates 2002-2006
(For General U.S. Workforce [GW] and Federally Mandated, Safety-Sensitive Workforce [FMSS], as a percentage of all such tests)

Test Group	Drug Category	Jan-May 2006	2005	2004	2003	2002
GW	Amphetamines	0.43%	0.48%	0.52%	0.49%	0.34%
FMSS	Amphetamines	0.28%	0.35%	0.31%	0.29%	0.28%

Positivity Rates By Drug Category**(For Federally Mandated, Safety-Sensitive Workers, as a Percentage of All Positives)***(Approximately 1.3 million tests from January to December 2005)*

Drug Category	2005	2004	2003	2002	2001
Acid/Base	0.27%	0.32%	0.37%	0.45%	0.32%
Amphetamines	14.8%	12.7%	11.4%	10.8%	9.6%
Cocaine	25.4%	23.2%	22.7%	21.1%	20.0%
Marijuana	47.8%	52.4%	53.6%	56.0%	58.3%
Opiates	7.7%	7.1%	7.4%	7.3%	8.5%
Oxidizing Adulterants (incl. Nitrites)	0.06%	0.42%	0.52%	0.90%	0.82%
PCP	1.8%	1.4%	1.7%	1.5%	1.7%
Substituted	2.3%	2.4%	2.3%	1.9%	0.77%

Positivity Rates By Drug Category**(For General U.S. Workforce, as a Percentage of All Positives)***(More than 6.0 million tests from January to December 2005)*

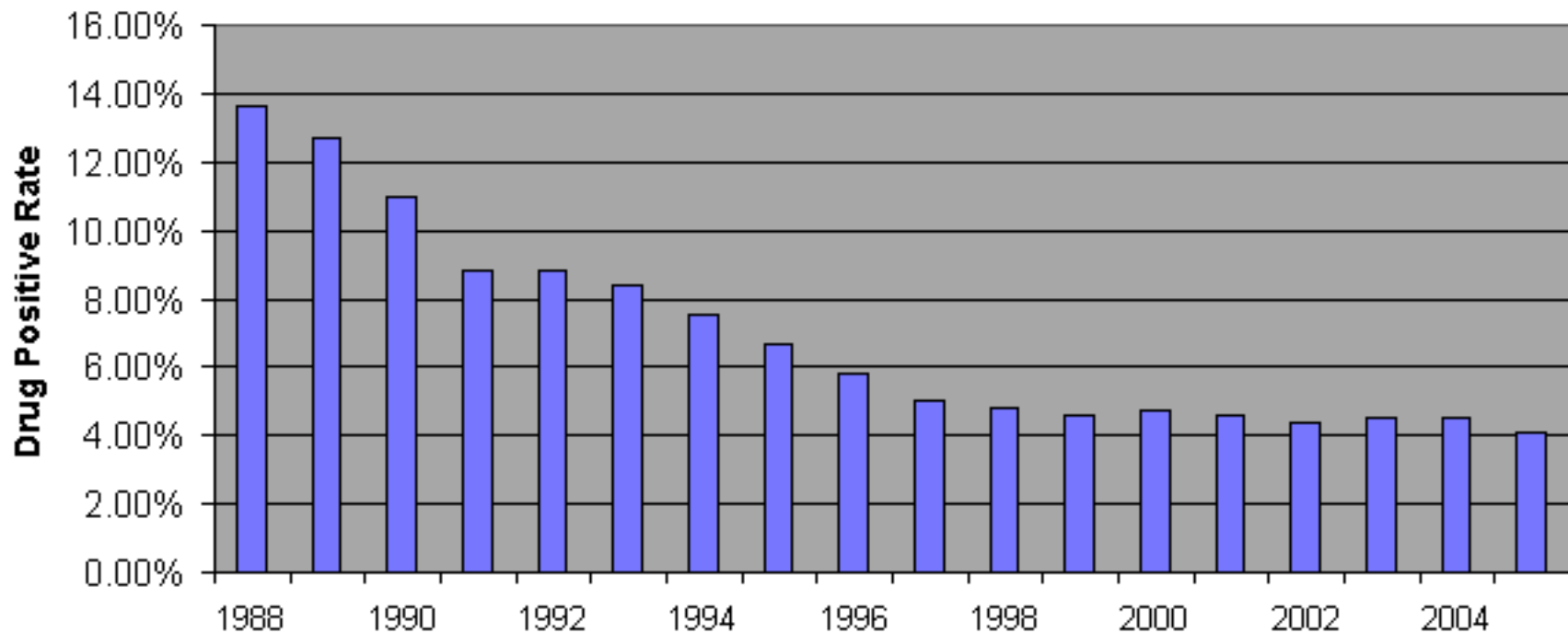
Drug Category	2005	2004	2003	2002	2001
Acid/Base	0.06%	0.11%	0.16%	0.25%	0.23%
Amphetamines	10.1%	10.0%	9.0%	6.7%	5.5%
Barbiturates	2.7%	2.7%	2.8%	2.9%	3.2%
Benzodiazepines	5.4%	5.0%	5.1%	5.0%	5.0%
Cocaine	14.7%	13.8%	13.8%	13.9%	13.2%
Marijuana	53.0%	55.0%	55.0%	57.7%	60.9%
Methadone	2.0%	1.7%	1.6%	1.2%	0.98%
Methaqualone	0.00%	0.00%	0.00%	0.00%	0.00%
Opiates	6.6%	6.1%	6.3%	5.3%	5.5%
Oxidizing Adulterants (incl. Nitrites)	0.00%	0.05%	0.16%	0.48%	0.51%
PCP	0.31%	0.28%	0.51%	0.47%	0.46%
Propoxyphene	4.9%	4.9%	5.0%	5.6%	4.0%
Substituted	0.26%	0.49%	0.58%	0.54%	0.48%

Positivity Rates By Drug Category
(For Combined U.S. Workforce, as a Percentage of All Positives)
(More than 7.3 million tests from January to December 2005)

Drug Category	2005	2004	2003	2002	2001
Acid/Base	0.08%	0.13%	0.18%	0.27%	0.24%
Amphetamines	10.6%	10.2%	9.3%	7.1%	5.9%
Barbiturates	2.5%	2.5%	2.5%	2.6%	2.9%
Benzodiazepines	4.9%	4.5%	4.7%	4.5%	4.5%
Cocaine	15.7%	14.7%	14.6%	14.6%	13.9%
Marijuana	52.5%	54.8%	54.9%	57.6%	60.6%
Methadone	1.8%	1.5%	1.4%	1.1%	0.88%
Methaqualone	0.00%	0.00%	0.00%	0.00%	0.00%
Opiates	6.7%	6.2%	6.4%	5.5%	5.8%
Oxidizing Adulterants (incl. Nitrites)	0.01%	0.09%	0.19%	0.52%	0.54%
PCP	0.45%	0.38%	0.61%	0.58%	0.59%
Propoxyphene	4.4%	4.4%	4.5%	5.1%	3.5%
Substituted	0.45%	0.66%	0.73%	0.68%	0.51%

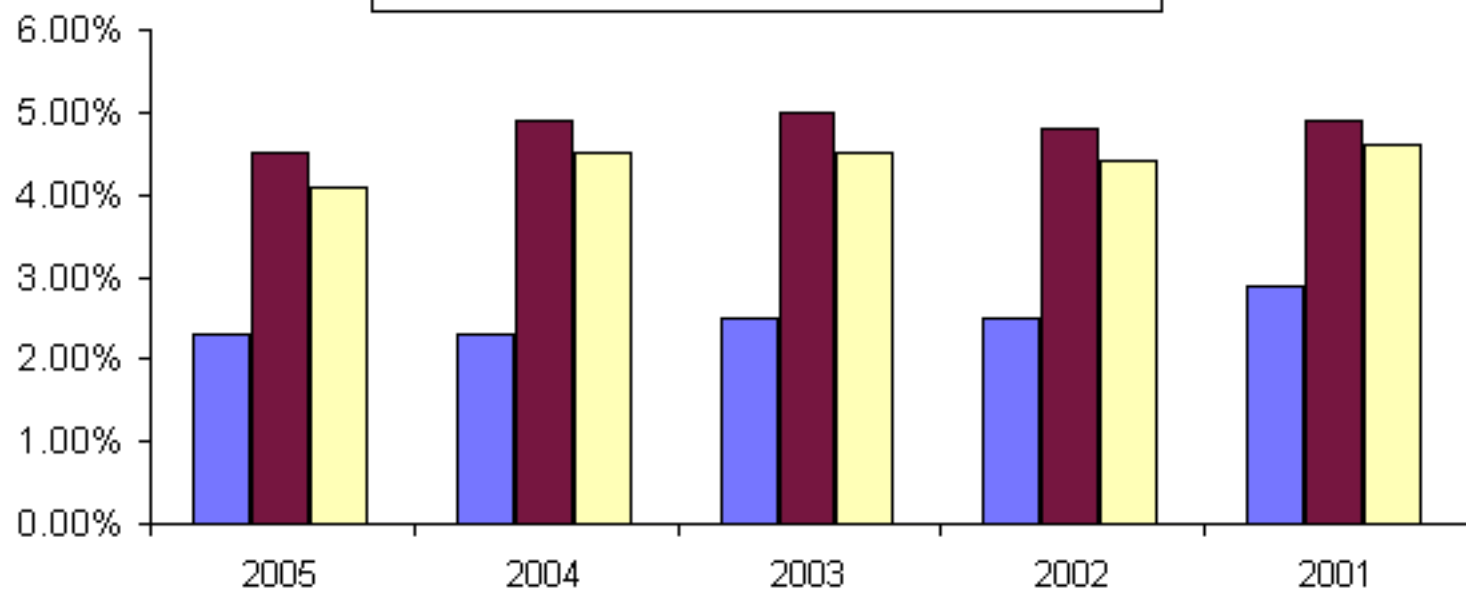
Drug Positivity Rates (For Combined U.S. Workforce)

(More than 7.3 million tests from January to December 2005)

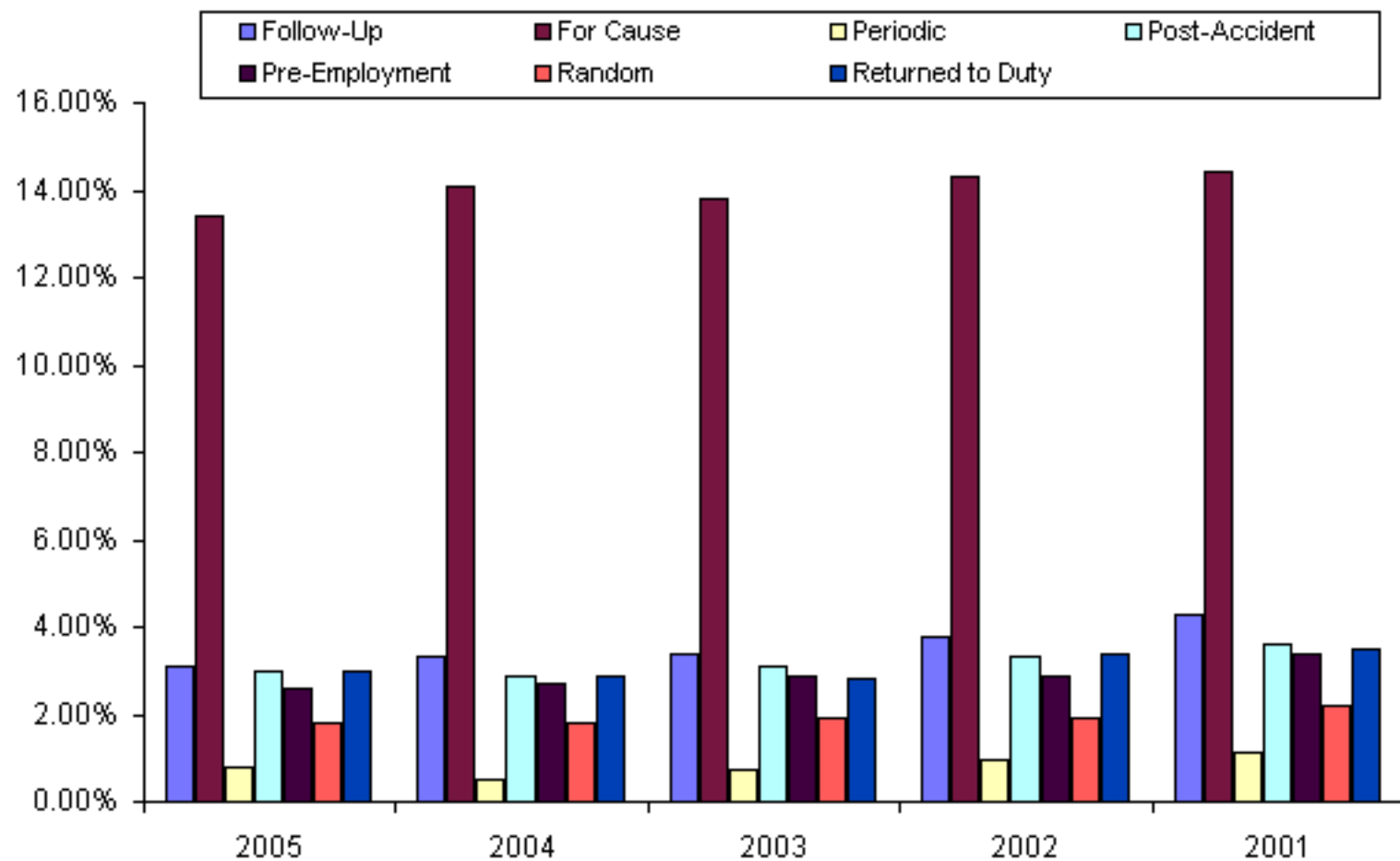


Positivity Rates By Testing Category

■ Federally-Mandated, Safety-Sensitive Workforce
■ General U.S. Workforce
■ Combined U.S. Workforce

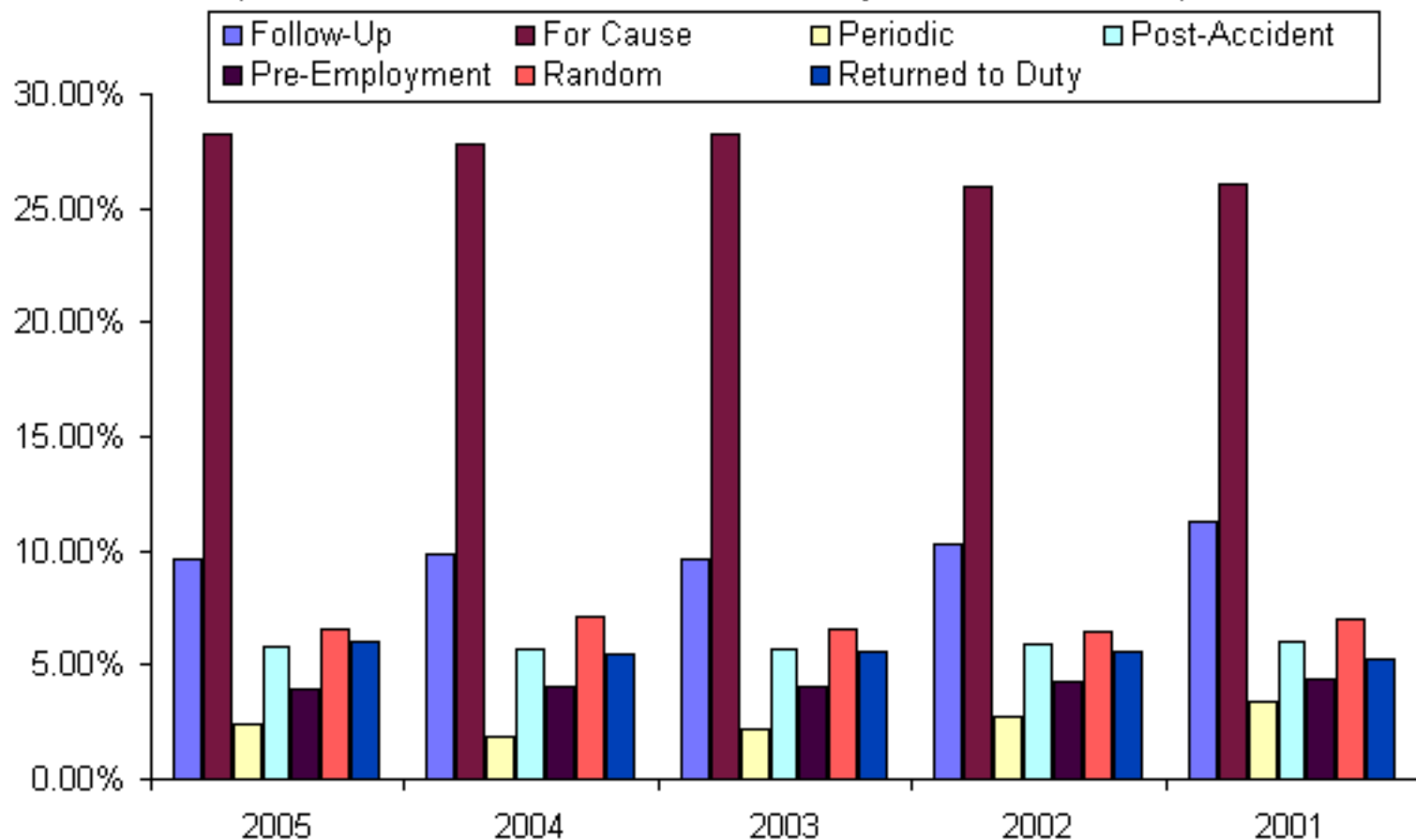


Positivity Rates By Testing Reason (For Federally-Mandated, Safety-Sensitive Workforce) (Approximately 1.3 million tests from January to December 2005)



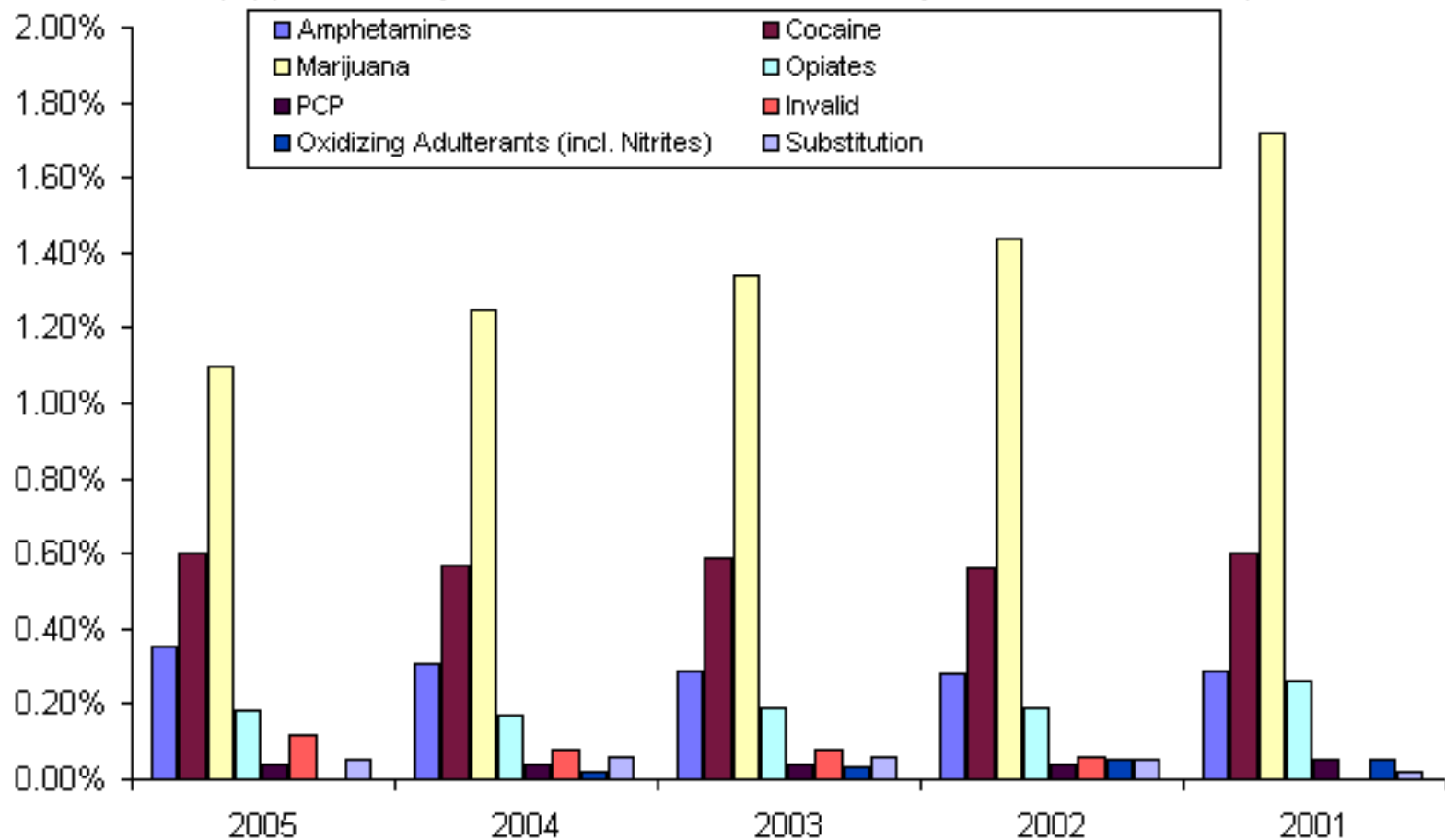
Positivity Rates By Testing Reason (For General U.S. Workforce)

(More than 6.0 million tests from January to December 2005)



Positivity Rates By Drug Category
*(For Federally-Mandated, Safety-Sensitive Workforce,
as a percentage of all such tests)*

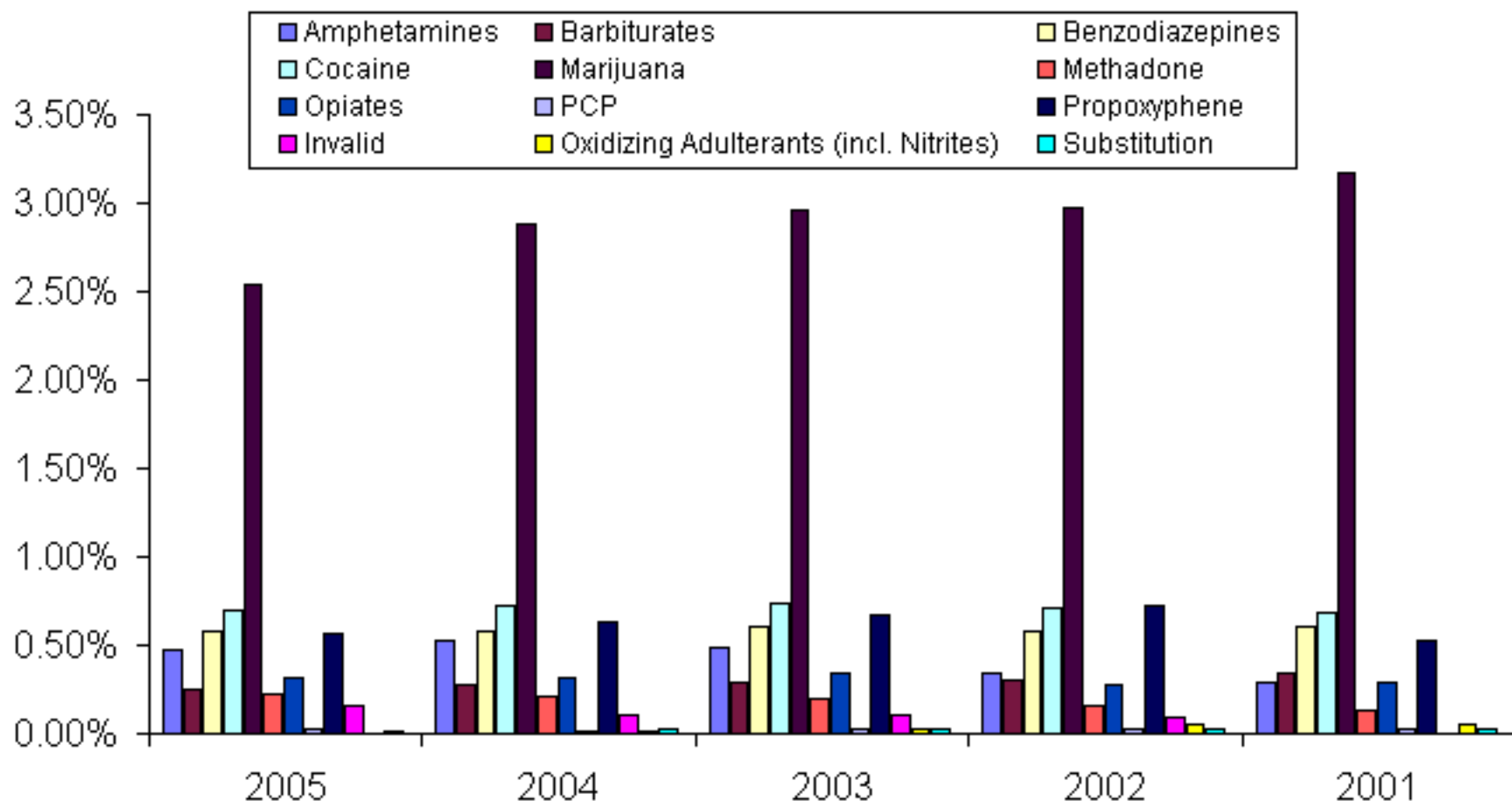
(Approximately 1.3 million tests from January to December 2005)



Positivity Rates By Drug Category

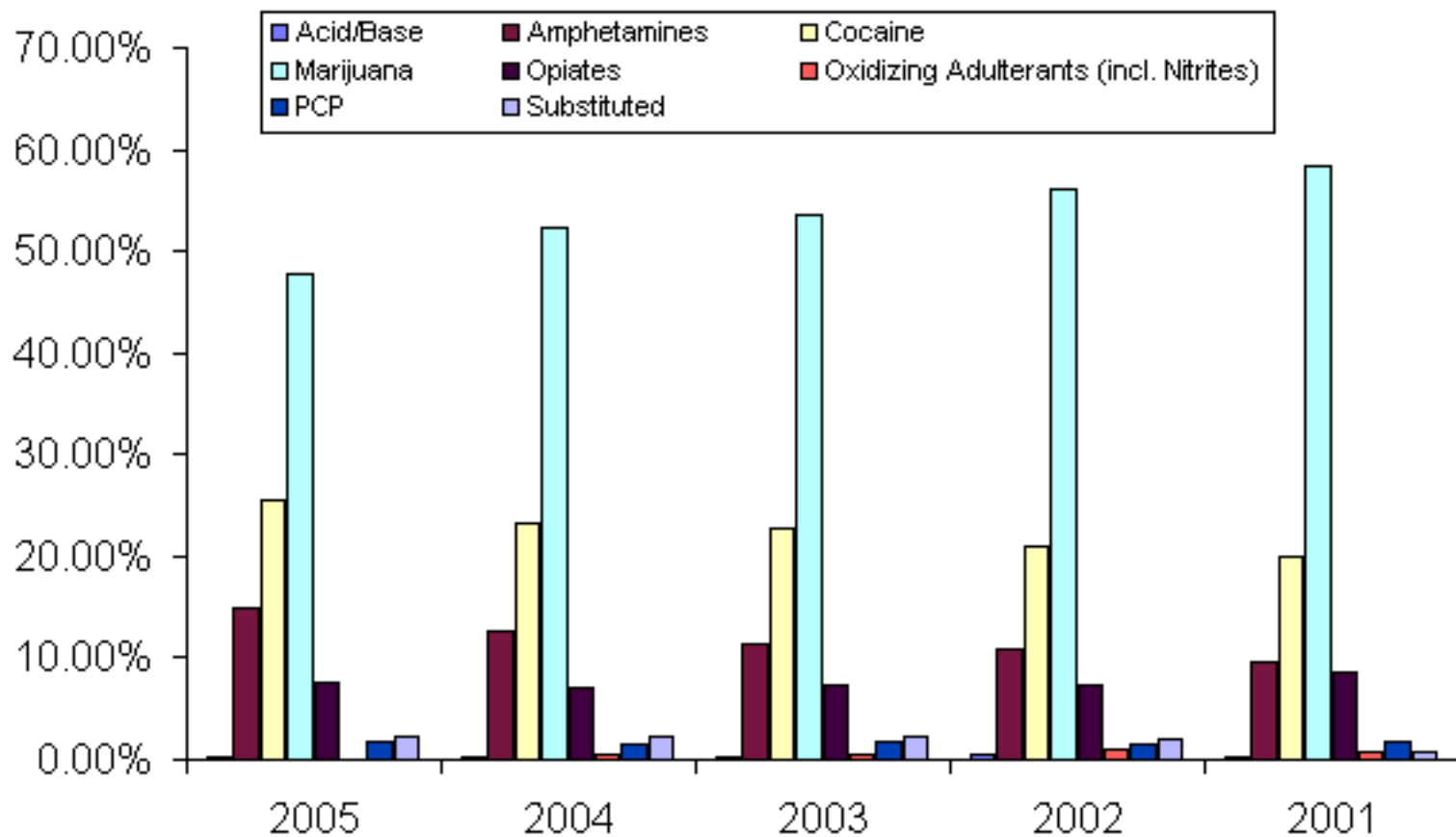
(For General U.S. Workforce, as a percentage of all such tests)

(More than 6.0 million tests from January to December 2005)



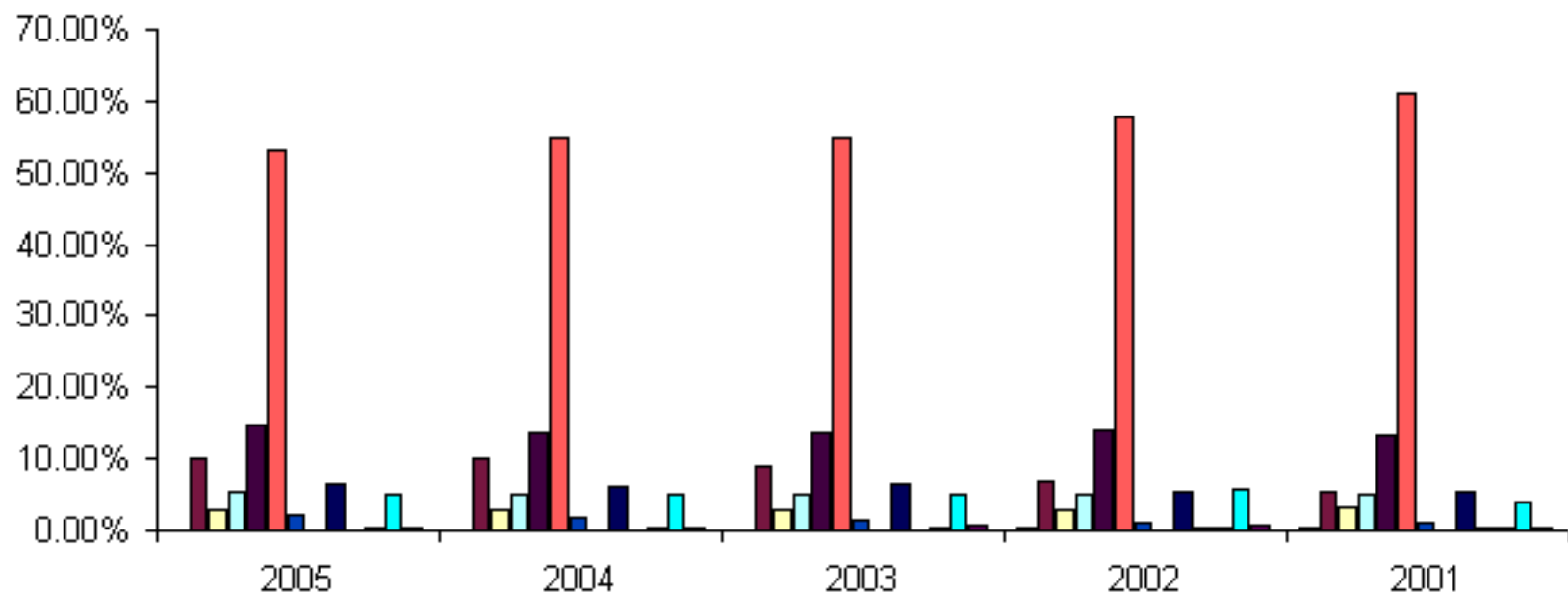
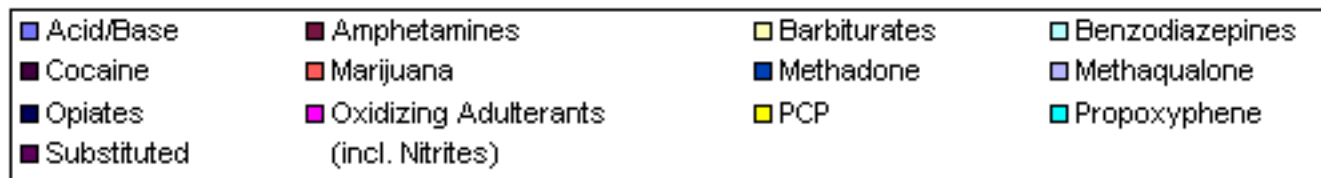
Positivity Rates By Drug Category (For Federally Mandated, Safety-Sensitive Workers, as a Percentage of All Positives)

(Approximately 1.3 million tests from January to December 2005)

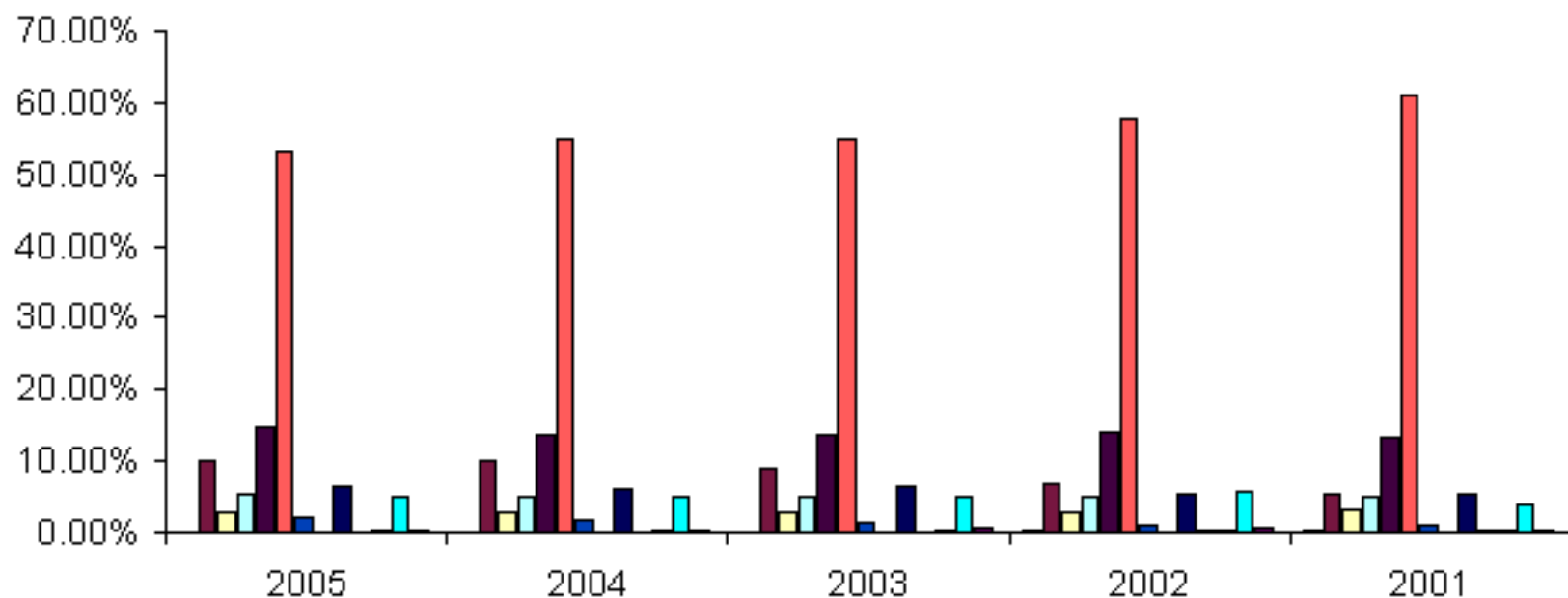
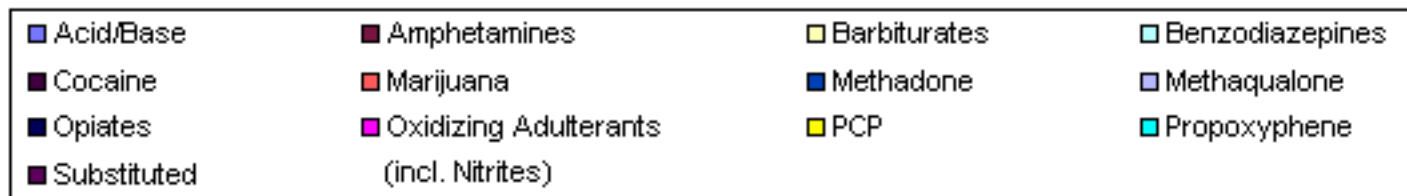


Positivity Rates By Drug Category

(For General U.S. Workforce, as a Percentage of All Positives)
(More than 6.0 million tests from January to December 2005)

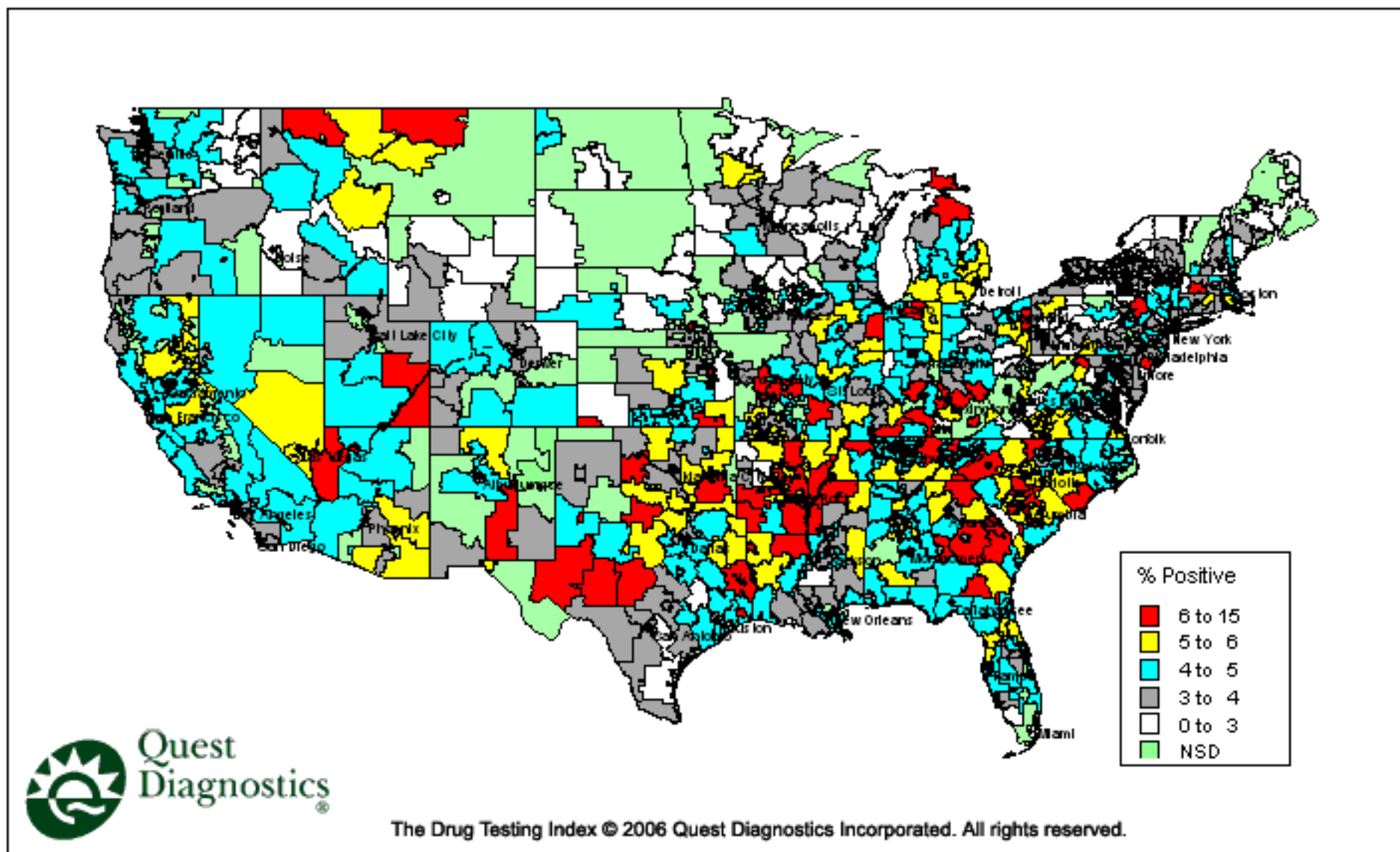


Positivity Rates By Drug Category
(For Combined U.S. Workforce, as a Percentage of All Positives)
(More than 7.3 million tests from January to December 2005)



Overall Positivity by 3-Digit Zipcode

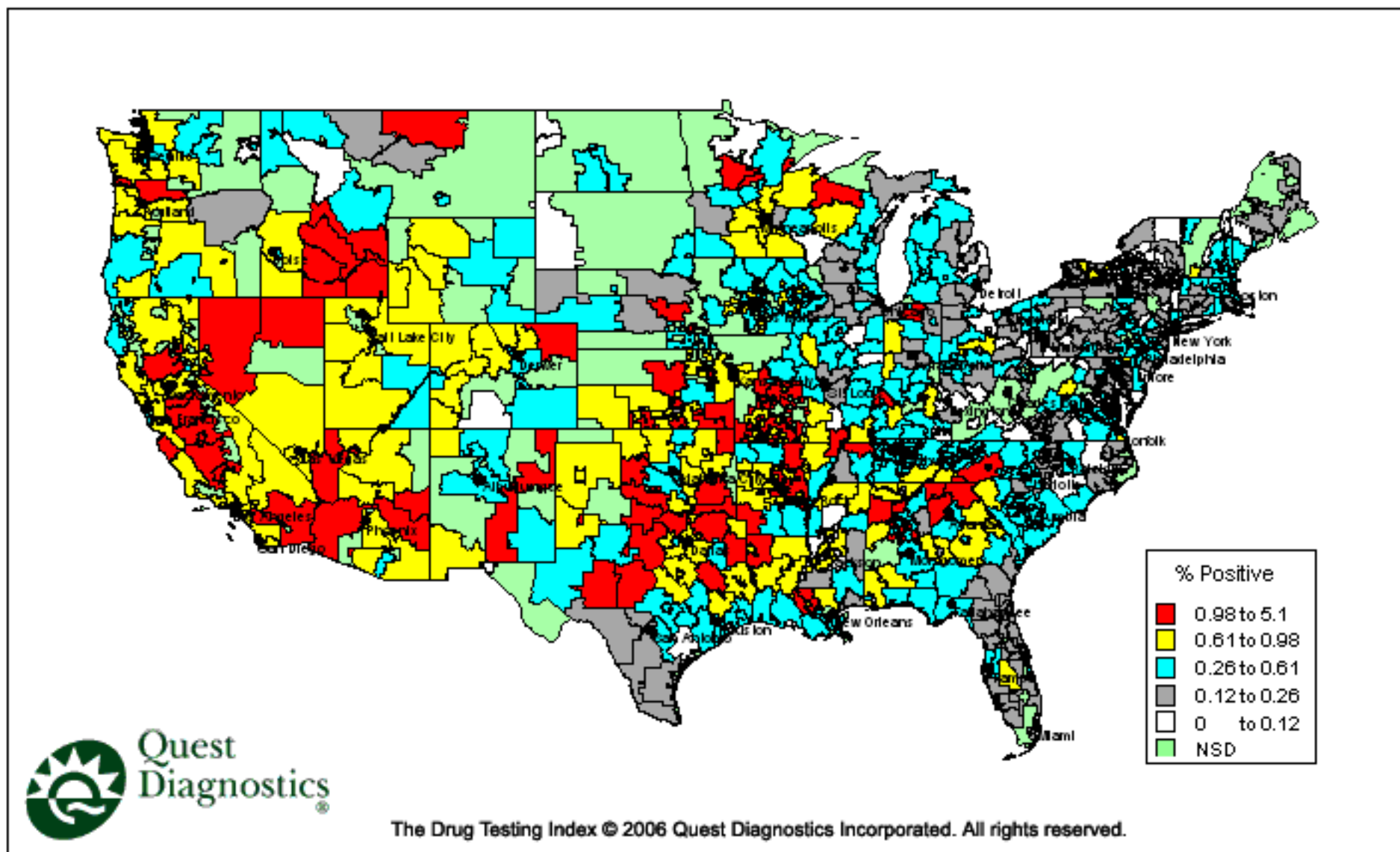
January–December 2005



The Drug Testing Index © 2006 Quest Diagnostics Incorporated. All rights reserved.

Amphetamines Positivity by 3-Digit Zipcode

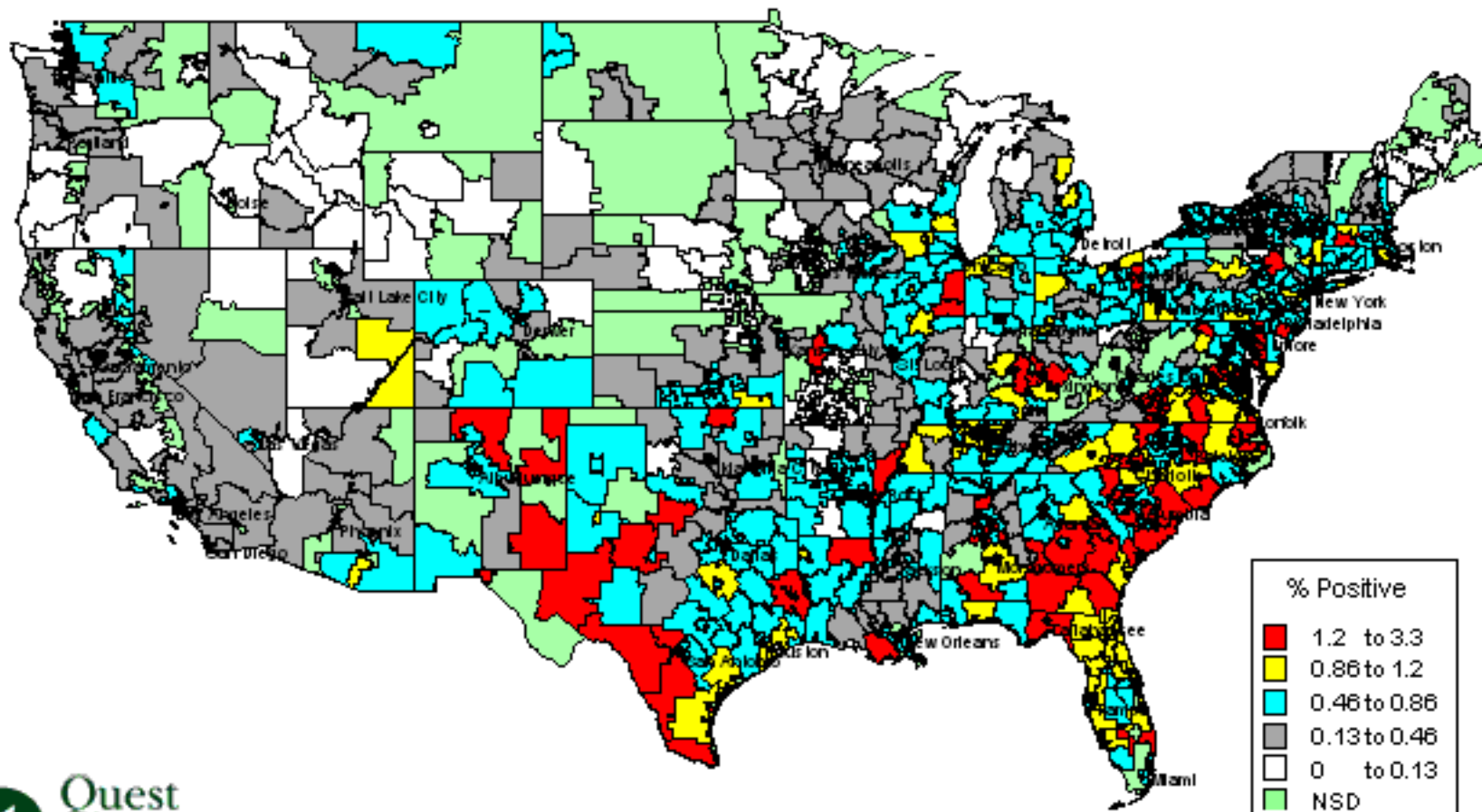
January–December 2005



The Drug Testing Index © 2006 Quest Diagnostics Incorporated. All rights reserved.

Cocaine Positivity by 3-Digit Zipcode

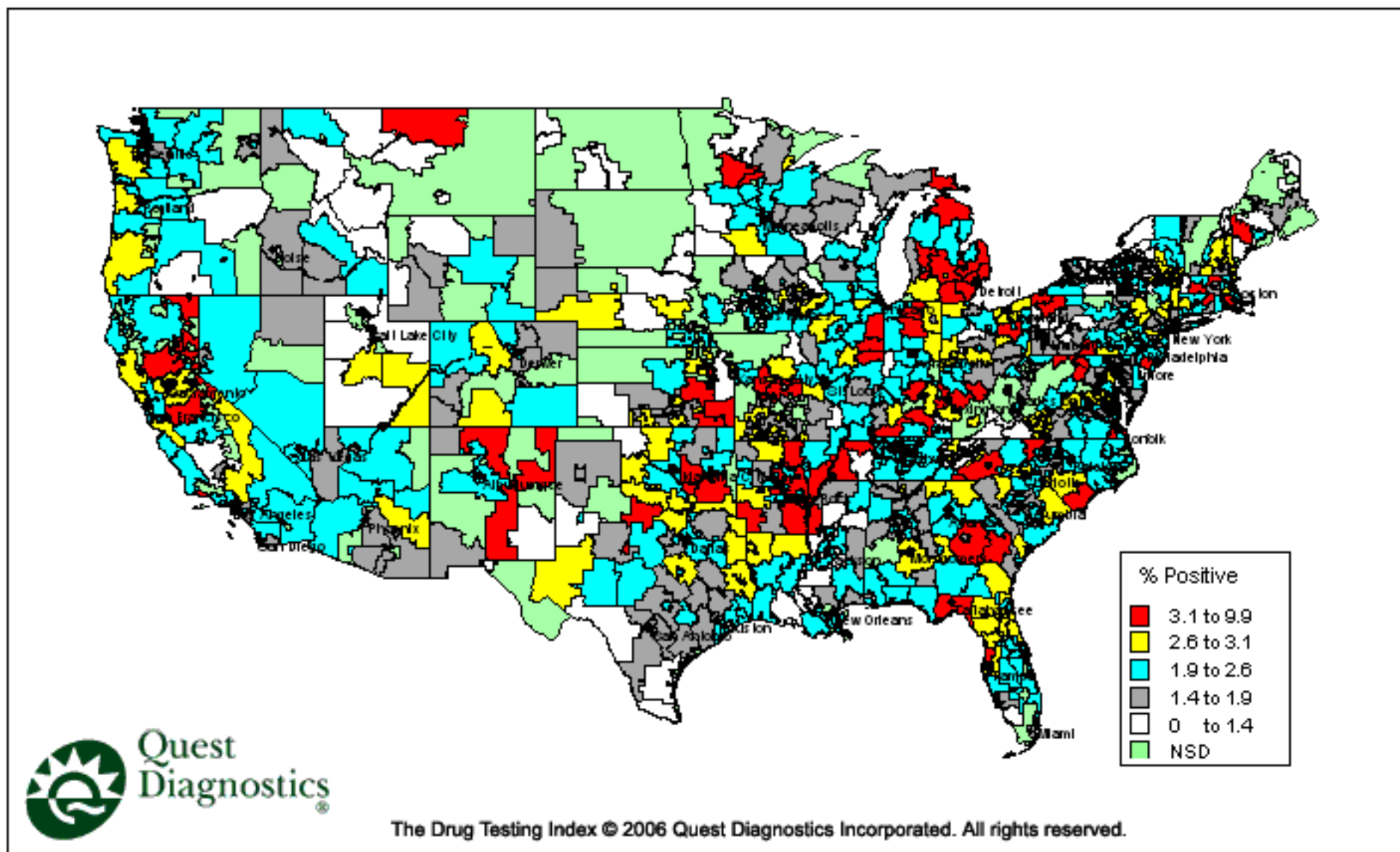
January–December 2005



The Drug Testing Index © 2006 Quest Diagnostics Incorporated. All rights reserved.

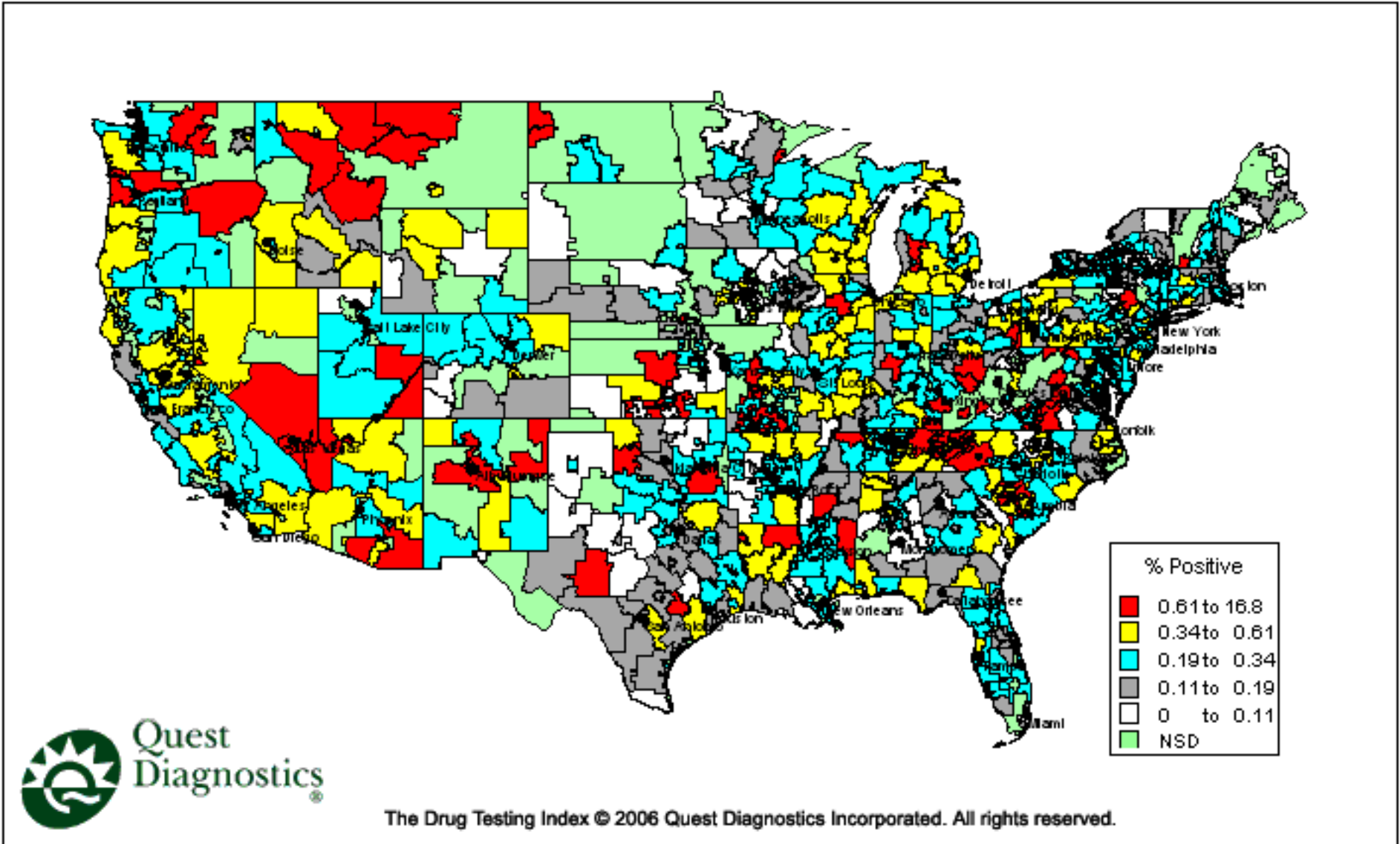
Marijuana Positivity by 3-Digit Zipcode

January–December 2005



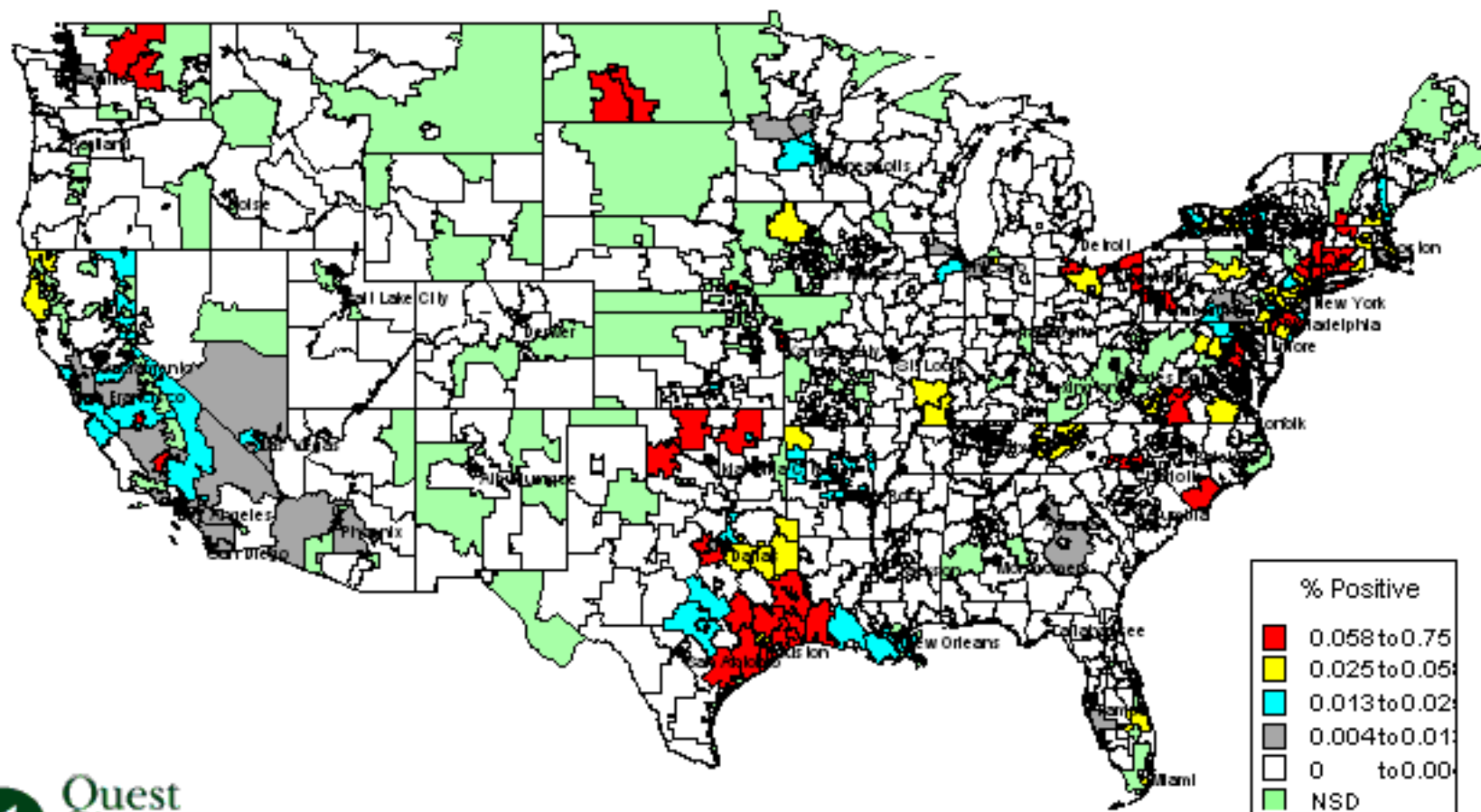
Opiates Positivity by 3-Digit Zipcode

January–December 2005



PCP Positivity by 3-Digit Zipcode

January–December 2005



The Drug Testing Index © 2006 Quest Diagnostics Incorporated. All rights reserved.